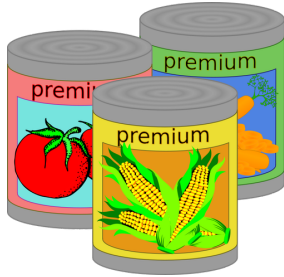


Draw a line between the food and where it should be stored.



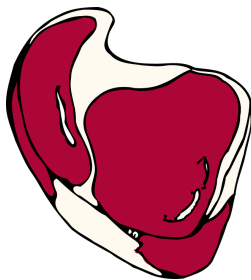
**Canned Foods**



**Fresh Fruit**



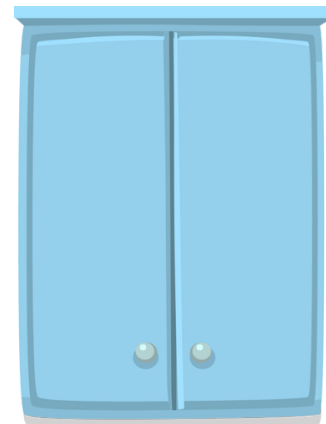
**Dairy Products (Milk and Cheese)**



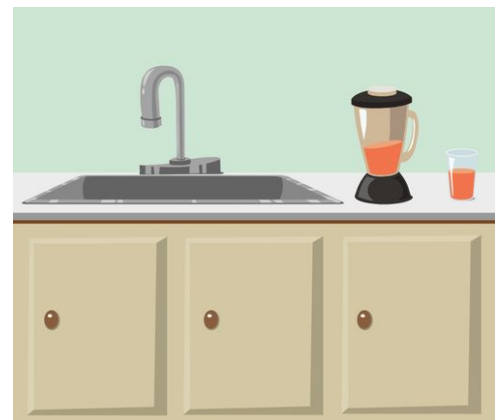
**Raw Meat**



**Refrigerator**

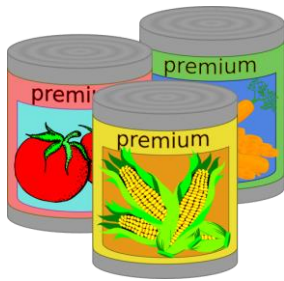


**Cabinet**



**Countertop**

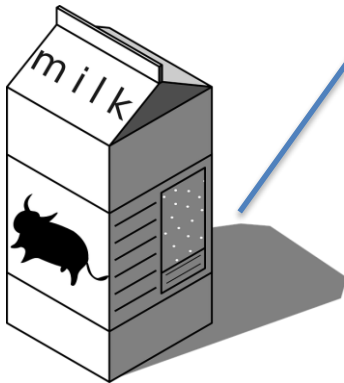
Draw a line between the food and where it should be stored.



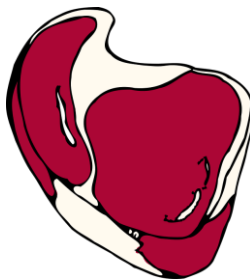
**Canned Foods**



**Fresh Fruit**



**Dairy Products (Milk and Cheese)**



**Raw Meat**



**Refrigerator**

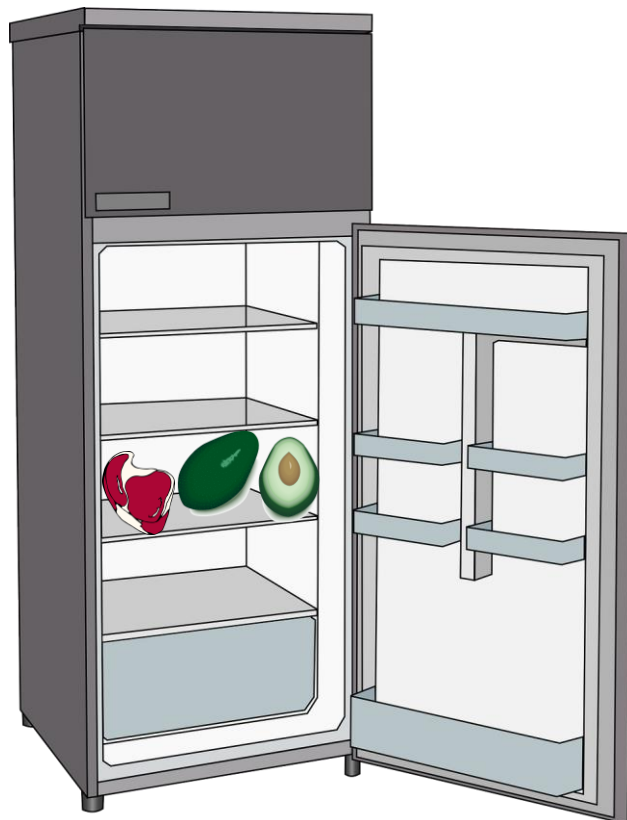
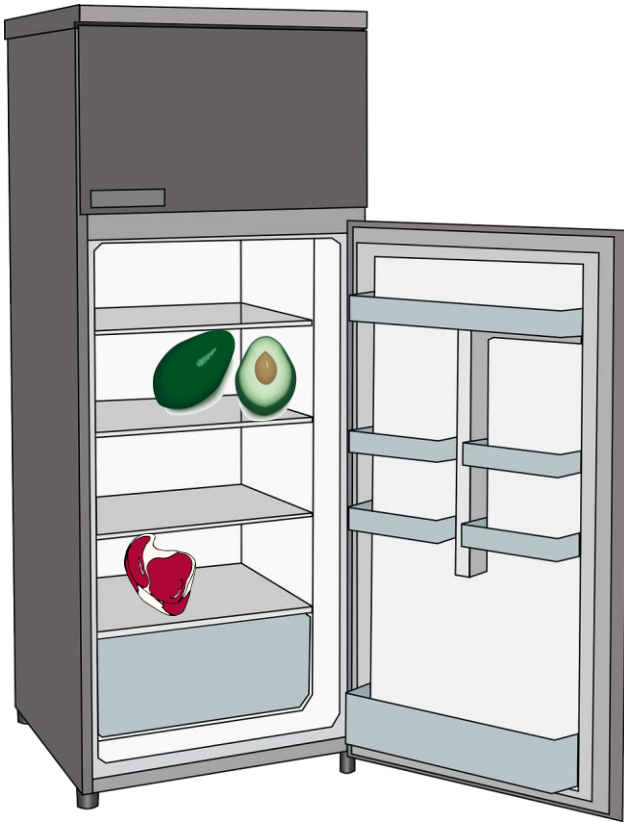


**Cabinet**



**Countertop**

Circle the refrigerator that has the food stored correctly



Circle the refrigerator that has the food stored correctly

